

MARTIN KELLEHER

PROPERTY LTD.

PSR NO. 004347



For Rent – 22 Rossa Street, Clonakilty P85 X400

- Superb, high profile commercial unit in one of Clonakilty's busiest streets
- Long unit c. 14 metres, great wall space and ideal for product display space
- Open plan c. 35 Sqm or 375 Sqft, very well fitted out and featuring high ceilings
 - Clonakilty has high levels of footfall all year round

Rent - €1,000 per month

Faxbridge Roundabout, Clonakilty, West Cork

023 8859111 | info@martinkelleher.ie | martinkelleher.ie

CRO No. 684543



ipav
Institute of Professional
Auctioneers & Valuers

Superb high profile commercial unit available to rent on one of Clonakilty's busiest shopping streets. This is a modern, open plan space with a large display window and high ceilings. It extends back approx. 14 metres with excellent wall space ideal for featuring products.

The shop extends to c. 35 SqM or 375 Sqft. Other features include extensive display units and wall ducting for cabling.

Ready to do business this location is ideal for a business start-up or an expanding established business.

Centrally located in multi-award winning, cosmopolitan and welcoming seaside town of Clonakilty at the heart of West Cork which boasts 12 beaches within 12 miles.

Services

All mains services are connected including water, electricity and telephone. Heating is via electric storage heating.

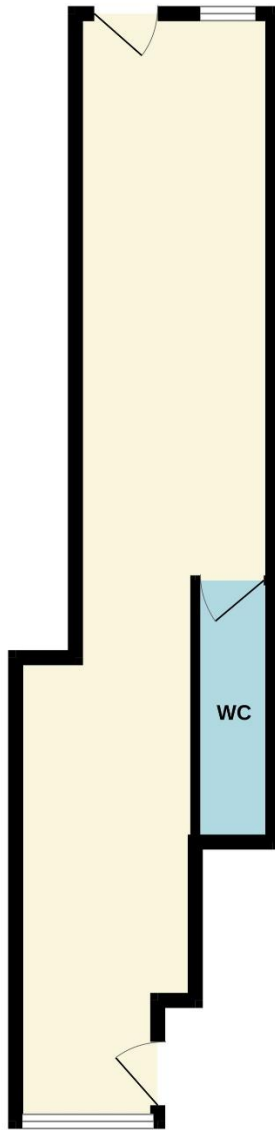
Directions

Type Eircode **P85 X400** into smart phone for exact driving directions.

Location Map



GROUND FLOOR



Whilst every attempt has been made to ensure the accuracy of the floorplan contained here, measurements of doors, windows, rooms and any other items are approximate and no responsibility is taken for any error, omission or mis-statement. This plan is for illustrative purposes only and should be used as such by any prospective purchaser. The services, systems and appliances shown have not been tested and no guarantee as to their operability or efficiency can be given.
Made with Metropix ©2023

Important Notice/Disclaimer

Martin Kelleher Property for themselves and for the vendors or lessors of the property whose agents they are, give notice that: The particulars are set out as a general outline for the guidance of intending purchasers or lessees, and do not constitute part of, an offer or contract. All descriptions, dimensions, references to condition and necessary permissions for use and occupation, and other details are given in good faith and are believed to be correct, but any intending purchasers or tenants should not rely on them as statements or representations of fact but must satisfy themselves by inspection or otherwise as to the correctness of each of them. No person in the employment of Martin Kelleher Property or the vendors has any authority to make or give representation or warranty whatever in relation to this development. We have not carried out a structural survey and the services, appliances and specific fittings have not been tested. All photographs, measurements, distances, maps and floor plans referred to are given as a guide only and should not be relied upon for the purchase of carpets, curtains, or any other fixtures and fittings. Lease details, service charges, title and ground rent, rates, if applicable should be checked by your solicitor prior to exchange of contracts.